

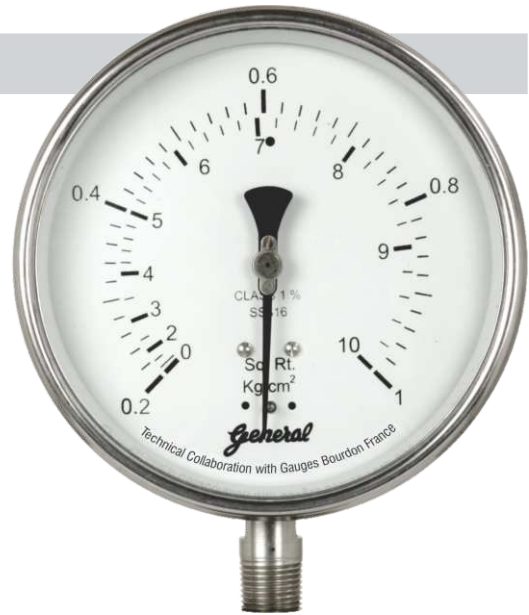
# Receiver Gauges

# General

## MODEL : RCPG

### Features

- Suitable for receiving pneumatic signals of level and flow transmitters
- Compliance to latest EN-837 standard
- Input Range : 0.2 to 1 kg/cm<sup>2</sup> or 3 to 15 psi
- Accuracy  $\pm 1\%$  FSD (Standard),  $\pm 0.5\%$  FSD on request



### Specifications

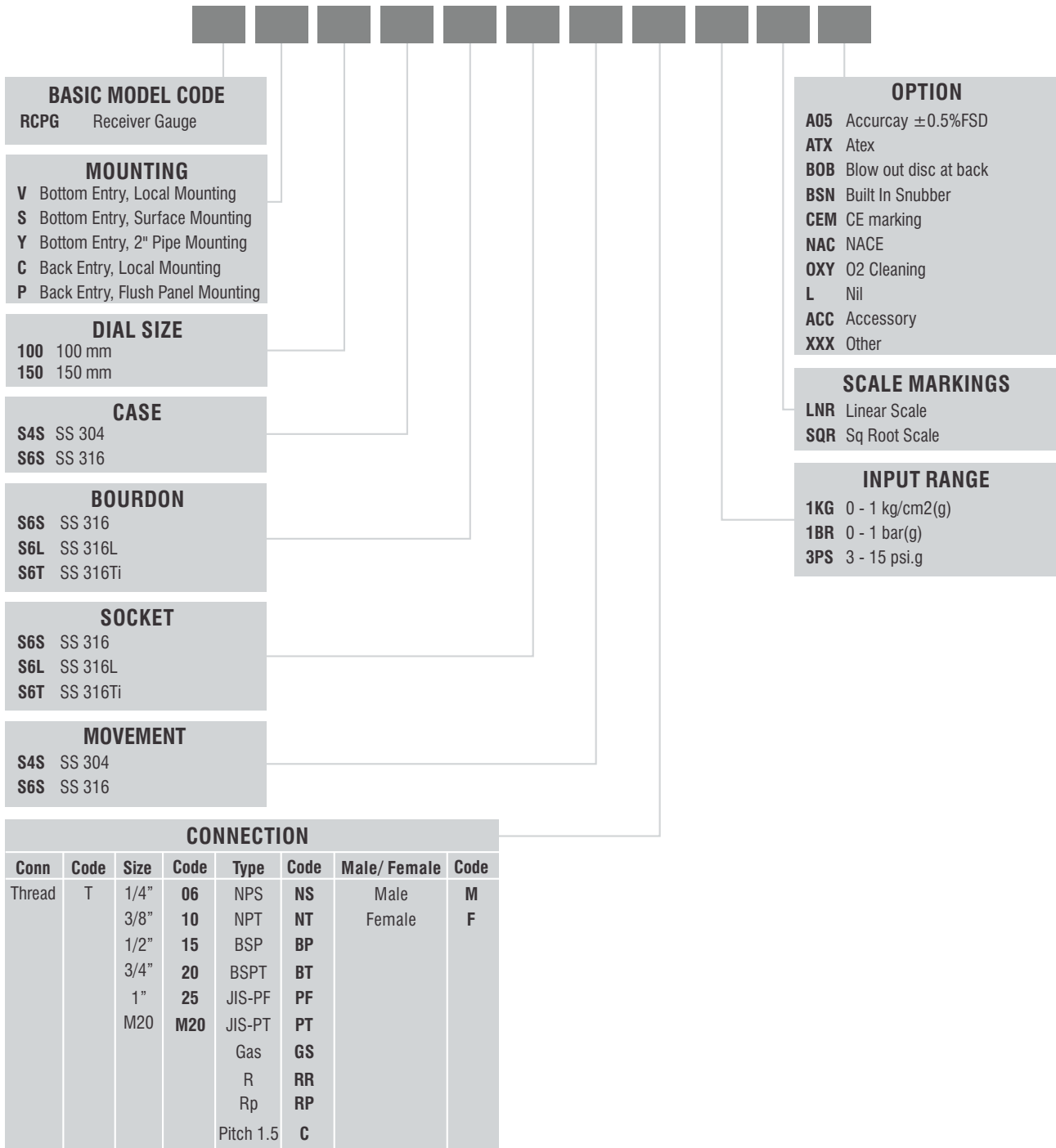
<b>Ref. Standard</b>	EN-837
<b>Dial</b>	100 mm / 150 mm in Aluminium, white background, black markings
<b>Case</b>	SS304 / SS316 with bayonet bezel
<b>Protection</b>	IP-68 (IS:13947 part I / IEC:60529)
<b>Window</b>	Safety glass (Shatter proof / Toughened glass)
<b>Bourdon</b>	SS316, SS316 Ti, SS316L
<b>Socket</b>	22mm Square in SS316, SS316 Ti, SS316L
<b>Movement</b>	SS304, SS316
<b>Input Range</b>	0.2 to 1 kg/cm <sup>2</sup> or 3 to 15 psi
<b>Scale</b>	0 - 100% Linear or 0 - 10 Sq. root
<b>Connection</b>	1/2" NPT (M) as standard (other optional)
<b>Accuracy</b>	$\pm 1.0\%$ FSD standard ( $\pm 0.5\%$ FSD on request)
<b>Over range</b>	As per EN 837
<b>Zero adjustment</b>	Micrometer Pointer
<b>Blow out disc</b>	Provided (on top)
<b>Temperature suitability</b>	Ambient (-)20°C to 60°C, Media 100°C
<b>Temperature Effect</b>	Within $\pm 0.4\%$ FSD/10°C, when temperature changes from reference temperature of 20°C (as per EN-837 standard)
<b>Optional</b>	NACE Compliance CE Atex

The parameters mentioned here are the standard specifications / values generally used for most of the process applications. Any other specification not appearing here also can be provided as per customer requirement. For higher temperature services above 100°C, we recommend to provide suitable cooling arrangement (Syphon, Cooling Tower, Impulse Tubing, Diaphragm Seal etc.)

Under Technical Collaboration with M/s. Gauges Bourdon, France

# Ordering Information

## MODEL



e.g. For 1/2"NPT(M), Code: **T15NTM**  
For M20x1.5 (F), Code: **TM20CF**

Sample Model Code: **RCPG-V-100-S4S-S6S-S6S-S4S-T06NTM-1KG-SQR-L**