

Flush Diaphragm Seal

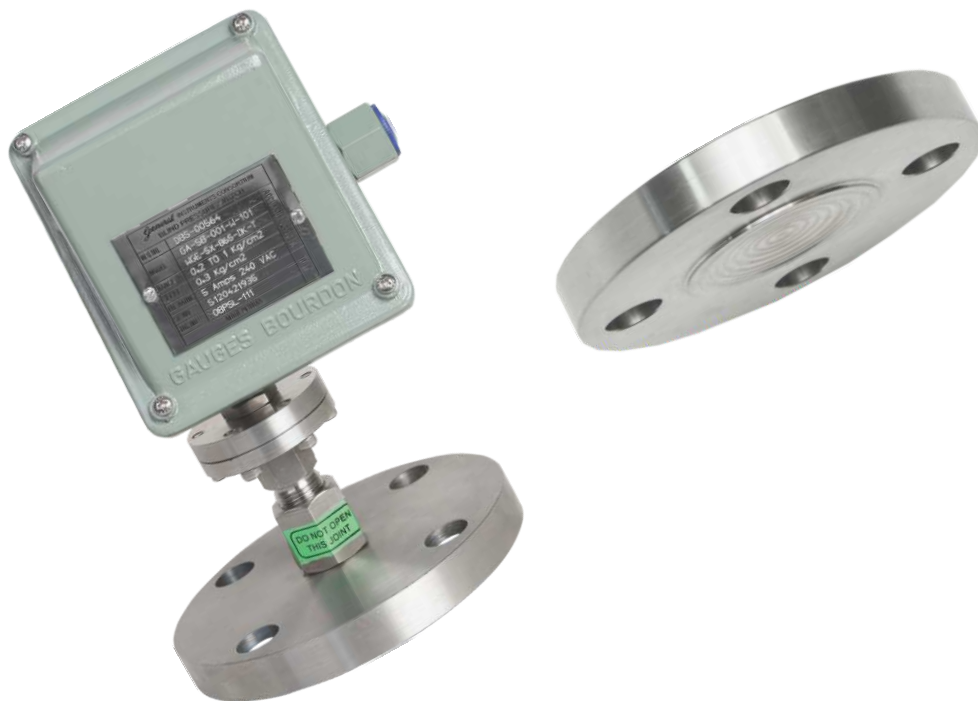
General

Model : CSU

Features

Process fluids which are highly viscous or containing solid particles could plug or clog the Diaphragm Seal cavity on the process side of the diaphragm. In order to overcome this difficulty, Flush Diaphragm Seal are used. In this design, since the Diaphragm is directly welded on the Flange Face, there are no cavities or hidden ports where the process fluid can enter and clog the system.

Optionally, Flushing Ring (Spacer Ring) with 1/4" NPT(F) or 1/2" NPT(F) connection can be provided as per the requirement. Flushing Connection enables the user to purge / flush out / clean the area below the diaphragm without removing the Seal from the process line.



Optional Feature

- **Capillary** for Remote mounting of the Pressure Instrument
- **Flushing Ring (Spacer Ring)** for purging / cleaning the area below the diaphragm without removing the Seal from the process line.
- **Stud / Nut & Gasket** (for Flanged Connection only), for assembling the Diaphragm Seal with Process Flange.

Ordering Information

FLUSH DIAPHRAGM SEAL (Flange)

MODEL: CSU- [] [] [] [] [] []

CONNECTION TYPE

FD Flush Diaphragm, Flanged Conn.

FLANGE (Non-wetted part)

CST CS
S4S SS 304
S4L SS 304L
S6S SS 316
S6L SS 316L
321 SS 321
TTM Titanium
XXX Other (Please Specify)

DIAPHRAGM (wetted part)

S4S SS 304 **HCB** Hastelloy B
S4L SS 304L **HCC** Hastelloy C
S6S SS 316 **TAN** Tantalum
S6L SS 316L **N20** Nickel 200
S6T SS 316Ti **MN4** Monel 400
321 SS 321 **XXX** Other (Please Specify)
TTM Titanium#

OPTION

4AR(*) SS 316 Capillary, SS 304 Armoured
4PV(*) SS 316 Capillary, SS 304 Armoured + PVC Covered
6AR(*) SS 316 Capillary, SS 316 Armoured
6PV(*) SS 316 Capillary, SS 316 Armoured + PVC Covered
CLT Cooling Tower
FR4()** Flushing Ring, 1/4" NPT(F)
FR2()** Flushing Ring, 1/2" NPT(F)
GSK Gasket
STN Stud & Nuts
L Nil
XXX Other (Please specify)

* Specify the length of Capillary in Meters.
 ** Specify Ring material (Refer Diaphragm table)

FILLING FLUID

DC1 DC-710
DC2 Silicone Oil (DC-200)
DC4 DC-704
DC5 DC-705
FLU Fluorolube
GLY Glycerine
HLC Halocarbon
VGO Food grade oil
XXX Other (Please specify)

PROCESS CONNECTION

FLANGED

CONN	CODE	SIZE	CODE	RATING	CODE	FACING	CODE
Flange	F	1"	25	150	A	RF	RF
		1-1/2"	40	300	B	RTJ	RJ
		2"	50	600	C		
		3"	80	900	D		
		4"	10	1500	E		
				2500	F		

e.g. For 100 NB 150# RF flange, Model Code: **F10ARF**

For Titanium Diaphragm, Flange also shall be Titanium only

Minimum Span of Range

Flange Size	Min Span of Range (RF flange)	Min Span of Range (RTJ flange)
1" NB	6 kg/cm2.g	N.A.
1-1/2" NB	2.5 kg/cm2.g	60 kg/cm2.g
2" NB	1 kg/cm2.g	2.5 kg/cm2.g
3" NB	1 kg/cm2.g	2.5 kg/cm2.g

Sample model Code: **CSU-FDF-CST-S6L-F40BRF-DC4-FR2(S6L)**